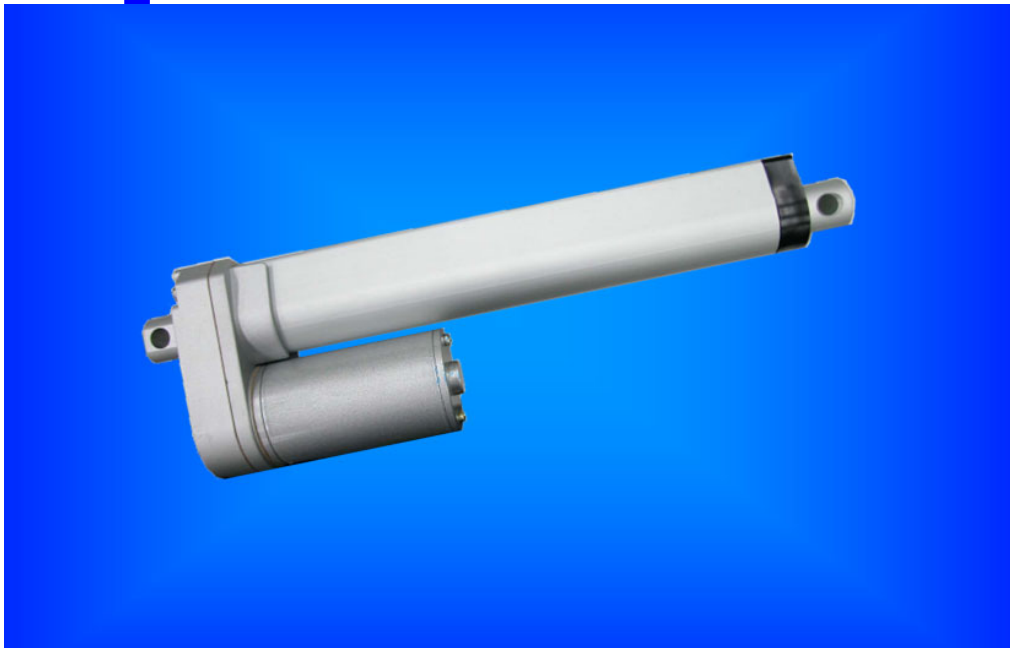




LINEAR ACTUATOR *Serie MLD3*



COMPACT

RELIABLE

EFFICIENT

Feature:

12/24 VDC Motor

Load up to 800N possible

Speed up to 55 mm/sec

Limit switches

Powder coated steel outer tube

Aluminium extension tube

Powder coated aluminium alloy housing

Lubrication for life time

Gear ratio	5:1	10:1	20:1*	30:1	40:1
Input voltage	12 / 24 VDC				
Load capacity	120N	240N	500N*	750N	800N
Stroke length	50, 100, 150, 200, 250, 300				
Speed at full load	45 mm/sec	22 mm/sec	12 mm/sec	8 mm/sec	5 mm/sec
Operating temp	-26°C - +65°C				
Duty cycle	25%				
Limit switch	Built in				

* gear ratio 20:1 up to 500N standard

